



ASSISTIVE TECHNOLOGY **PRODUCT COLLECTION**

WWW.MOGOMOUNTS.COM | WWW.MODULARHOSE.COM | WWW.GIRAFFEBOTTLE.COM



+ ModularHose +



MODULARHOSE

MODULARHOSE.COM

SALES@MODULARHOSE.COM

1-630-922-5005

MOGO MOUNTS

MOGOMOUNTS.COM

SALES@MOGOMOUNTS.COM

1-630-922-5010

GIRAFFE BOTTLE

GIRAFFEBOTTLE.COM

SALES@GIRAFFEBOTTLE.COM

1-630-922-5004

FIND ASSISTIVE TECHNOLOGY MOUNTING FOR PHONES, TABLETS, AAC DEVICES, AND MORE! EXPLORE WHEELCHAIR MOUNTS, ACCESSORIES, AND SOLUTIONS BY MODULARHOSE, MOGO MOUNTING SOLUTIONS, AND GIRAFFE BOTTLE.

Everything can be viewed at **ModularHose.com**, or explored by brand from corresponding websites.

For orders, reach out through phone, email, or websites. Acceptable forms of purchase include Visa, Master Card, American Express, and Discover.

Purchase orders are accepted from assistive technology centers, Fortune 1000 companies, school districts, and other educational institutions. Other organizations may also qualify for terms when credit information is supplied and approved.



MODULARHOSE

04 MODULARHOSE INTRODUCTION

A look at ModularHose products and pieces, and tips for best use

06 TABLET SOLUTIONS

ModularHose mounting solutions, featuring the universal tablet holder

08 MOBILE SOLUTIONS

ModularHose mounting solutions for mobile devices

09 PODIUM SOLUTIONS

ModularHose solutions featuring podiums for displaying devices/items

10 SWITCHES + SMALL DEVICES

Mounting options great for cameras, switches or other small devices

12 PARTS + ACCESSORIES

An expanded look at the ModularHose parts and product line

MOGO MOUNTS

14 MOGO MOUNTS INTRODUCTION

Explore the mounting arms and QuickClick™ accessories from MOGO

16 MODULAR METAL ARMS

Features of the Modular Metal Arm, as well as its components

18 FLEXIBLE STEEL ARMS

Find the best ways to implement the Flexible Steel Arm in solutions

19 MODULAR PLASTIC ARMS

Pieces and tools for solutions featuring the Modular Plastic Arm

20 QUICKCLICK™ ACCESSORIES

An overview of the QuickClick™ system, as well as the product line

GIRAFFE BOTTLE

22 GIRAFFE BOTTLE INTRODUCTION

An overview of Giraffe Bottle and best uses for product types

24 BOTTLES, MOUNTS + ACCESSORIES

Hydration bottles and ways to implement them, from Giraffe Bottle

26 JOURNEY NECK HYDRATION SYSTEM

Kits with Giraffe Bottle's flexible, assistive Journey Neck

28 TOWER XL NECK HANDS-FREE SYSTEM

Kits featuring the sturdy, modular Tower XL Neck from Giraffe Bottle

30 TOWER NECK HANDS-FREE SYSTEM

Explore kits featuring Giraffe Bottle's original Tower Neck

ASSISTIVE TECHNOLOGY PRODUCT COLLECTION



AN INTRODUCTION TO MODULAR HOSE

The original Modular Hose system; durable plastic hosing, fittings, and accessories that allow you to build a variety of configurations. Originally used in industrial applications for durability and ability to customize, ModularHose has found a place in creating all kinds of Assistive Technology solutions.

Systems support weight successfully when positioned correctly. Shorter/vertical arms can support more weight, and dual armed systems are recommended for displaying heavier devices, utilizing a bridged mount.

ModularHose offers pre-assembled AT Kits for convenient applications (tablets, mobile devices, etc.), as well as individual parts for custom assembly.

Starter kits are also available, providing our users with a collection of common parts and accessories used in the Assistive Technology field. You can make several featured kits, and still have extra parts left over to play with.

CHECK OUT ITEMS

PAGES 05 - 13



DIY OR MIX + MATCH



THE MODULARHOSE SYSTEM IS DESIGNED TO COME APART AND BE REFORMED IN DIFFERENT CONSTRUCTS. PRE-MADE KITS CAN BE TAKEN APART TO MAKE SOMETHING NEW, OR ADDED ONTO WITH INDIVIDUAL PARTS.

CHECK OUT POPULAR PARTS AND THEIR RECOMMENDED PURPOSE FOR FINDING YOUR PERFECT SETUP!



SPRING CLAMP

FLAT SURFACES (UP TO 2" WD)



ADJUSTABLE CLAMP

ROUND TUBING/FLAT SURFACES (UP TO 2")



MINI CLAMP

ROUND TUBING (UP TO 1.5" DIA)



MODULARHOSE STARTER KIT

Starter kit comes with most common parts used in the AT field. Provided parts in this kit can create some ModularHose AT Kits, or a custom configuration.

- 12 Feet of ModularHose
- (4) 3" Mounting Disc
- (2) 4" x 6" Mounting Plate
- (4) Spring Clamps
- (1) Adjustable Clamp
- (4) Double Sockets
- (8) Velcro® Hook/Loop Coins
- (4) 3M Dual Lock® Strips
- (2) Y Fittings
- (1) Assembly Tool
- (1) 100 Pack Cable Ties

#100001



MODULARHOSE SUPER KIT

Super kit offers virtually all parts used in the AT Field, including weighted bases and a tablet holder. Make a few standard ModularHose AT kits, or create something custom.

- 16 Feet of ModularHose
- (4) 3" Mounting Disc
- (2) 4" x 6" Mounting Plate
- (6) Spring Clamps
- (1) Adjustable Clamp
- (1) Mini Clamp
- (10) Double Sockets
- (2) Y Fittings
- (1) 100 Pack Cable Ties
- (5) Velcro® Hook/Loop Coins
- (4) 3M Dual Lock® Strips
- (1) Assembly Tool
- (1) Large Weighted Base
- (1) Platform/Podium
- (1) Tablet Holder
- (1) Set Deep V-Tabs
- (1) Silicone Phone Strap
- (1) Phone Holder

#100006



MODULARHOSE TABLET SOLUTIONS

- Works with virtually all tablets including: iPad, iPad Mini, iPad Pro, Microsoft Surface, Samsung Galaxy, Amazon Kindle, and most other tablets and e-readers from major technology developers and suppliers.
- For tablets measuring diagonally up to 15" (381 mm), and 0.4" (10mm) thick.
- Optional Deep V-Tabs can be added for tablets with skins/cases up to 0.75" (19mm) in thickness.
 - Single Arm designs work best when kept short and vertical, so weight of device can be supported.
 - Dual Arm configurations are recommended to hold devices weighing between 1-2 lbs.



8" KIT PICTURED

TABLET HOLDER ARM W/SPRING CLAMP

Quickly and easily clamp and position a tablet where you need it - a desk, tray, table, etc.

- Modular Arm
 - Adjustable Tablet Holder
 - Spring Clamp
- *Pre-assembled*

- Tablet Holder, 8" #110711**
Tablet Holder, 8" w/Deep V-Tabs . . #110712
 (8" arm suitable for most tablets)
Tablet Holder, 14" #110721
Tablet Holder, 14" w/Deep V-Tabs . #110722
 (14" arm suitable for mini tablets or standard tablets if the arm is in a vertical position)



TABLET HOLDER TWO ARM SPRING CLAMP

The two arm kit is great for wheelchairs and other locations where the tablet could be moved in multiple positions. Works well with tablets weighing 2 lbs or less.

- Dual 18" Modular Arm
 - Adjustable Tablet Holder
 - (2) Spring Clamps
- *Pre-assembled*

- Tablet Holder #117161**
Tablet Holder w/Deep V-Tabs. . . . #117162



8" KIT PICTURED

TABLET HOLDER W/DESKTOP BASE

A great solution for using your tablet at a desk, table, counter, floor, or on a tray; almost any flat surface will do.

- Modular Arm
 - Adjustable Tablet Holder
 - 12" x 6" Desktop Base
- *Pre-assembled*

Desktop Holder, 8" #190711

Desktop Holder, 8" w/Deep V-Tabs #190712
(8" arm suitable for most tablets)

Desktop Holder, 14" #190721

Desktop Holder, 14" w/Deep V-Tabs #190722
(14" arm suitable for mini tablets or standard tablets if the arm is in a vertical position)

TABLET HOLDER W/PLATE & STRAPS

Adjustable straps hold tablet in place for hands free operation. Ideal for legs, sofa arms, car seats, and more.

- Modular Arm
 - Adjustable tablet holder
 - Plate with straps
- *Pre-assembled*

Tablet Holder #130701

Tablet Holder w/Deep V-Tabs. #130702



MODULARHOSE UNIVERSAL TABLET HOLDER

Already have some ModularHose pieces or need to update? The tablet holder is available separately and could integrate into your current setup. Tailored for swift installation, this piece works with tablets measuring diagonally up to 15" and 0.4" thick.

570002



DUAL ARM KIT

W/SPRING CLAMPS + TABLET HOLDER



MODULARHOSE DEEP V-TABS

Extra deep v-tabs for tablet holder, ideal for tablets & devices that are in a case or skins up to 0.75".

570009 (pack of 2)



MODULARHOSE MOBILE SOLUTIONS

- Kits feature an adjustable phone holder that scales to fit most phones and cases.
- Short arms with clamps are ideal for mobile scooters, chairs, or bike handlebars.
- Phone Holder is designed for devices 2.25" to 4" wide.
- Silicone phone strap can be used with phone holder, or with 3" mounting disc.



14" KIT PICTURED

PHONE HOLDER W/SPRING CLAMP

A solution for positioning/holding phones and small devices. Spring Clamp attaches to surfaces up to 2" thick.

- Modular Arm
 - Adjustable Phone Holder
 - Spring Clamp
- *Pre-assembled

Phone Holder w/Clamp, 8" #110611
 Phone Holder w/Clamp, 14" #110621
 Phone Holder w/Clamp, 18" #110631
 Phone Holder w/Clamp, 24" #110641



PHONE HOLDER SILICONE PHONE STRAP

Works with the 3" mounting disc, stretching around the phone for setup, or can be added to the phone clip for extra security (disc/hose not included).

#501111



18" KIT PICTURED

PHONE HOLDER W/MINI CLAMP

A simple solution for positioning and holding phones or other small devices. Clamp opens up to 1.5".

- Modular Arm
 - Adjustable Phone Holder
 - Adjustable Mini Clamp
- *Pre-assembled

Phone Holder w/Mini Clamp, 8" . . #110613
 Phone Holder w/Mini Clamp, 14" . . #110623
 Phone Holder w/Mini Clamp, 18" . . #110633
 Phone Holder w/Mini Clamp, 24" . . #110643



PODIUM TWO ARM SPRING CLAMP

Offers excellent support of heavier items such as a tablet or communication device.

- Dual 18" Modular Arm
 - (2) Spring Clamps
 - 3 Installed Mounting Beads
- *Pre-assembled*

#114161

PODIUM W/ DESKTOP BASE

An 8.5 x 11" podium style tray with a weighted desktop base. Great for applications on flat surfaces.

- 8" Modular Arm
 - Weighted Desktop Base
 - 3 Installed Mounting Beads
- *Pre-assembled*

#190411

MODULARHOSE PODIUM SOLUTIONS

- Great for holding up a variety of items, including tablets, phones, light-weight communication devices, workbooks, learning aids, and more.
- Podium features 3 mounting beads on the back for multiple supporting arms.
- Shorter arms create better support; a second arm may be needed when holding more than 1 lb.

SMALL ITEM?

A DOUBLE SPRING CLAMP COMBO IS PERFECT FOR HOLDING UP A LIGHT-WEIGHT ITEM, IF THERE'S NO NEED FOR AN ENTIRE PODIUM, OR EVEN MOUNTING PLATE. DON'T BE AFRAID TO GET CREATIVE!



14" KIT PICTURED



14" KIT PICTURED

PODIUM ARM W/ SPRING CLAMP

An 8.5 x 11" podium style tray with a supporting arm. Great for holding all kinds of devices, workbooks, and more.

- Modular Arm
 - Spring Clamp
 - 3 Installed Mounting Beads
- *Pre-assembled*

Platform/Podium, 8" #110411

Platform/Podium, 14" #110421

DISPLAY DOUBLE SPRING CLAMP

A double clamp/arm combo. Useful for holding lightweight items such as pictures, boards, and small devices.

- Modular Arm
 - (2) Spring Clamps
- *Pre-assembled*

Double Clamp, 14" #110121

Double Clamp, 24" #110141



5 FT KIT PICTURED

SWITCHES**DOUBLE DISC MOUNTING SOLUTION**

Great for double head switch situations, with enough length to customize.

- Modular Arm
 - (2) 3" Mounting Discs
 - 10 (3ft) or 20 (5ft) Reusable Cable Ties
 - (2) Velcro® Coin sets
- *Pre-assembled*

Double Disc, 3 ft #120261

Double Disc, 5 ft #120292



14" KIT PICTURED

SWITCHES**DISC W/ ADJUSTABLE CLAMP**

Helpful solution for positioning/holding a switch or lightweight item. Clamp mounts to round or flat surfaces.

- Modular Arm
 - 3" Mounting Disc
 - Adjustable Clamp
 - Velcro® Coin sets
- *Pre-assembled*

Adj. Clamp w/ Disc, 14" #160221

Adj. Clamp w/ Disc, 24" #160241



- The three inch disc holds a variety of switches, devices, and other items (Velcro® can be used for mounting).
- Longer lengths are ideal for wrapping the arm around the back of a chair, and attaching with cable ties every few inches.
- Mounting plate kits allow for attaching various items or devices, and can support up to 2 pounds depending on the configuration.

CAMERA MOUNT**SPRING CLAMP W/ CAMERA DISC**

Mount a camera or similar device, with the help of a 1/4" - 20 Bolt in attached camera mounting disc.

- Modular Arm
 - 3" Camera Mounting Disc
 - Spring Clamp
- *Pre-assembled*

#110222

**MODULARHOSE**

SWITCHES + SMALL DEVICES



1 FT KIT PICTURED

SWITCHES**DISC W/ SPRING CLAMP**

A solution for placing a switch or lightweight item where you need it. Clamp attaches to flat surfaces up to 2" thick.

- Modular Arm
 - 3" Mounting Disc
 - Spring Clamp
 - Velcro® Coin sets
- *Pre-assembled*

Spring Clamp w/ Disc, 1 ft #110221

Spring Clamp w/ Disc, 2 ft #110241



5 FT KIT PICTURED

SWITCHES**SINGLE DISC SOLUTION**

Great starter kit for switches and other items. Available in 3 or 5 foot versions.

- Modular Arm
 - 3" Mounting Disc
 - 10 (3ft) or 20 (5ft) Reusable Cable Ties
 - Velcro® Coin sets
- *Pre-assembled*

Single Disc, 3 ft #120061

Single Disc, 5 ft #120092

**MOUNTING PLATE****TWO ARM SPRING CLAMP**

Great for lightweight communication devices (including tablets), multiple switches, platforms, and more.

- Dual 18" Modular Arm
 - 4" x 6" Mounting Plate
 - (2) Spring Clamps
 - (2) 3M Dual Lock® Pieces
- *Pre-assembled*

#113161



14" KIT PICTURED

MOUNTING PLATE**ARM W/ SPRING CLAMP**

Great for lightweight communication devices, multiple switches, platforms, and more.

- Modular Arm
 - 4" x 6" Mounting Plate
 - Spring Clamp
 - (2) 3M Dual Lock® Pieces
- *Pre-assembled*

Clamp w/Plate, 14" #110321

Clamp w/Plate, 24" #110341



MODULARHOSE MODULAR ARM/HOSE SYSTEM

The 3/4" ID System (1.25" Outer Diameter) is the most common sizing in the AT field. Segments can be separated at each bead.

- 1 ft Segment Pack #61501**
Comes as two 6" segments.
- 25 ft Segment Box #69540**
Comes as fifty-nine 6" segments.
- 50 ft Coil #69541**
Comes as a continuous coil.



MODULARHOSE ELBOW FITTING

#61515 (Pack of 2)



MODULARHOSE SURFACE MOUNT

#60533 (Pack of 2)



MODULARHOSE PHONE STRAP

Silicone strap for security, works with the 3" disc/phone holder.

#501111



MODULARHOSE CABLE TIES

10.5" reusable cable ties.

#90710 (Pack of 10)
#90712 (Pack of 100)



MODULARHOSE TUBE CLAMP

Mount ModularHose to round tubing (1" or 7/8").

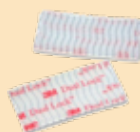
#511001



MODULARHOSE ASSEMBLY TOOL

Optional tool for the quick assembly of configurations.

#213399 (3/4" ID)



MODULARHOSE 3M DUAL LOCK™

(2) 1" x 3" pieces with adhesive.

#90707 (Set of 1)



MODULARHOSE VELCRO™ COINS

Adhesive backed for mounting.

#90705 (Set of 1)

MODULARHOSE PARTS +

ACCESSORIES



- Lightweight pieces and modular arms are easy to adjust and position.
 - Setup is intuitive; ModularHose can be assembled with or without assistance of tools.
 - Accessories include mounting options made specifically for tablets, phones, communication devices, switches, and more.
 - Extend the use of existing kits by adding separately listed accessories.
- Mixing and matching is available for unique solutions that may not be featured in kits.





MODULARHOSE DOUBLE SOCKET

#61514 (Pack of 4)



MODULARHOSE Y FITTING

#61511 (Pack of 2)



MODULARHOSE SPRING CLAMP

Approx. 6" in length with heavy duty vinyl tips/grips. Opens up to 2".

#510001



MODULARHOSE ADJUSTABLE CLAMP

Heavy-duty clamp for flat surfaces or round tubing. Jaw opens to 2".

#512001



MODULARHOSE MINI CLAMP

A compact clamp ideal for tubing (can be used for flat surfaces). Opens to 1.5".

#514113



MODULARHOSE TABLET HOLDER

Adjustable tablet holder scales to 15" to hold virtually all tablets on the corners.

#570002

Optional: Add the deep v-tabs to hold encased tablets up to 0.75".

#570009



MODULARHOSE PHONE HOLDER

Adjusts to most phones/cases. Scales 2.25" to 4" wide and up to 0.75" thick.

#501123



MODULARHOSE BOTTLE HOLDER

Aluminum bottle cage that can be adjusted for different sized bottles.

#500312



MODULARHOSE DESKTOP BASE

Weighted base great for a variety of flat surfaces. Approx. 12" x 6", 2.2 lbs.

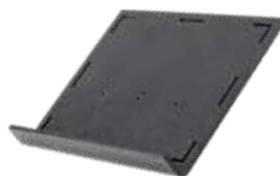
#590001



MODULARHOSE MOUNTING DISC

Flat 3" surface disc allows for easy attaching of items (fits Velcro coins).

#522301



MODULARHOSE PODIUM

This 8.5" x 11" podium/platform has a 1.5" lip for holding items in place.

#540001



MODULARHOSE MOUNTING PLATE

The 4 x 6" plate allows for a variety of uses (best in use with 3M Dual Lock).

#530001



MODULARHOSE DEVICE MOUNTING DISC

Disc with standard 1/4" - 20 bolt. Allows for mounting of camera/similar devices.

#522311



MODULARHOSE MOUNT PLATE W/ STRAPS

Use this to attach the system to legs, arms, beds, chairs, and more. 4" x 6" plate with dual 24" adjustable straps.

#530041



MODULARHOSE QUICKCLICK ADAPTER

Add this part to the ModularHose system so it can use QuickClick accessories (featured on pg. 21).

#213390

AN INTRODUCTION TO MOGO MOUNTING SOLUTIONS



MOGO Mounting Solutions are adaptively designed to offer a variety of unique and flexible options for mounting. Three innovative arm styles are available to choose from, all with the integrated QuickClick™ feature that allows for easy swapping of accessory ends.

Intuitive and easy to use, MOGO mounts can be configured to compliment various applications and specific user needs. Materials are always built strong and made to last, with a range of accessories to choose from. Find an arm, click in a base/ accessory, and you're set for use! Pieces can be bought seperately or as part of kits.

CHECK OUT ITEMS

PAGES 15 - 21





FLEXIBLE STEEL

FIXED LENGTHS + RIGID SUPPORT

MODULAR PLASTIC

FLEXIBLE, LIGHTWEIGHT + POSEABLE

MODULAR METAL

VERSATILE + CUSTOMIZABLE

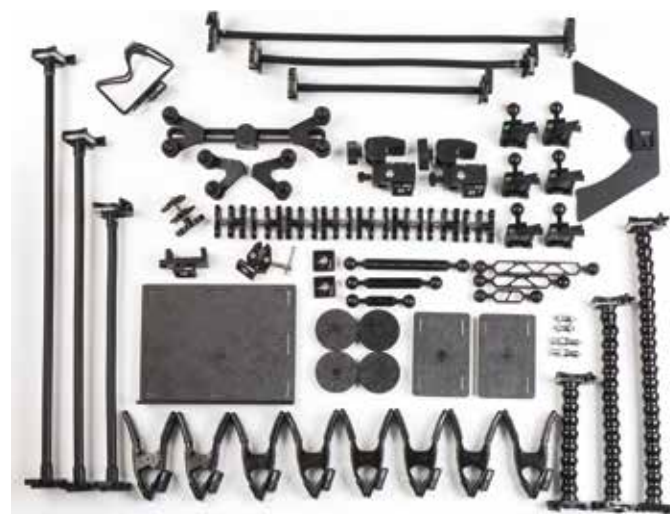


MOGO MOUNTS EVALUATION KIT PLUS

The PLUS kit offers common MOGO items for testing different configurations, to see what works best. Features samples of the three arms, plus QuickClick (QC) bases and accessories.

- (1) 14" Modular Plastic Arm
- (1) 20" Modular Plastic Arm
- (6) QC Spring Clamps
- (1) QC Adjustable Clamp
- (1) QC Mini Clamp
- (1) QC Phone Holder
- (1) QC Tablet Holder
- (1) Set Deep V-Tabs
- (4) QC 3" Mounting Discs
- (3) Modular Metal Arm Segments (1 Each of 4", 6", and 8")
- (6) Modular Metal Clamps
- (4) Ball-to-QuickClick Ends
- (1) 12" Flexible Steel Arm - Med
- (1) 18" Flexible Steel Arm - Med
- (1) 18" Flexible Steel Arm - Pro
- (1) 24" Flexible Steel Arm - Pro
- (2) QC 4" x 6" Plates

#210013

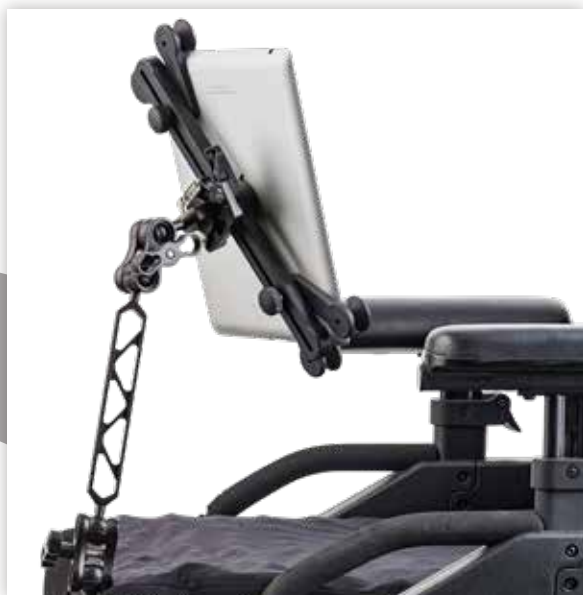


MOGO MOUNTS SUPER EVALUATION KIT

The Super kit offers virtually every MOGO item to test different configurations, to see what works best for applications. Features samples of the three arms, plus QuickClick (QC) bases and accessories.

- (1) 6" Modular Plastic Arm
- (1) 14" Modular Plastic Arm
- (1) 20" Modular Plastic Arm
- (8) QC Spring Clamps
- (1) QC Desktop Base
- (2) QC Adjustable Clamps
- (1) QC Mini Clamp
- (2) QC 4" x 6" Plates
- (4) QC 3" Mounting Discs
- (1) QC Bottle Holder
- (1) QC Phone Holder
- (1) QC Tablet Holder
- (1) Set Deep V-Tabs
- (6) Modular Metal Arm Segments (2 Each of 4", 6", and 8")
- (8) Modular Metal Clamps
- (1) Modular Metal 3-Way Clamp
- (6) Ball-to-QuickClick Ends
- (1) 12" Flexible Steel Arm - Med
- (1) 18" Flexible Steel Arm - Med
- (1) 24" Flexible Steel Arm - Med
- (1) 18" Flexible Steel Arm - Pro
- (1) 24" Flexible Steel Arm - Pro
- (1) 30" Flexible Steel Arm - Pro
- (2) QC Connector Plates
- (1) QC Podium

#210015



MODULAR METAL KIT #1

16" Kit includes:

- (2) QuickClick Connectors
- (2) Clamps
- (1) 8" Double Ball Arm

Modular Metal Kit 1: #211011



KIT #3

W/WEIGHTED DESKTOP BASE



MOGO MODULAR METAL ARMS

- Versatile, made for light to medium weight applications.
 - Great for creating custom solutions.
- Double ball arms allow you to create a variety of setups.
- The system allows for sharp angles to work around objects for optimal positioning.
- Sections made from aluminum, keeping the arm light-weight.
- Adjustments can be made by loosening clamps to reposition.



MODULAR METAL BALL ADAPTER

The ball adapter allows for mounting of personal items to a 1/4" - 20 hole (standard camera mount), or attaching communication aids to the flat surface.

#211921



MODULAR METAL KIT #2

21" Kit includes:

- (2) QuickClick Connectors
- (3) Clamps
- (1) 4" Double Ball Arm
- (1) 8" Double Ball Arm

Modular Metal Kit 2: #211012



MODULAR METAL KIT #3

28" Kit includes:

- (2) QuickClick Connectors
- (4) Clamps
- (1) 4" Double Ball Arm
- (1) 6" Double Ball Arm
- (1) 8" Double Ball Arm

Modular Metal Kit 3: #211013

EASILY ADJUSTABLE



MODULAR METAL DOUBLE BALL ARMS

- 4" Double Ball Arm: #211104**
- 6" Double Ball Arm: #211106**
- 8" Double Ball Arm: #211108**

A STANDARD MOGO MODULAR METAL ARM HAS 3 PRIMARY COMPONENTS: DOUBLE BALL ARM SEGMENTS, JOINT CLAMP CONNECTORS, AND BALL-TO-QUICKCLICK ENDS.

EASILY ADD LENGTH TO EXISTING KITS WITH EXTRA CLAMPS AND ARMS, OR SECTIONS CAN BE REMOVED FOR SOMETHING SHORTER.



MODULAR METAL 3 BALL JOINT CLAMP

#211913



MODULAR METAL BALL TO QUICKCLICK

#211901



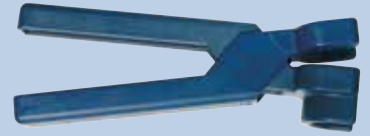
MODULAR METAL 2 BALL JOINT CLAMP

#211911

MOGO

FLEXIBLE STEEL ARMS

- Commonly known as a “gooseneck arm”, it is a universal arm that is straightforward and simple to use.
- Available in different lengths with integrated QuickClick system.
 - Available in different strengths.
 - Medium arms suitable for a wide range of mounts.
 - Pro arms are more rigid, with higher strength rating.
 - Arms coated in easy to clean vinyl cover.
 - Medium arm outer diameter: 0.54”.
 - Pro arm outer diameter: 0.65”.



MODULAR PLASTIC ASSEMBLY TOOL

This optional accessory eases modular plastic assembly. Does not assemble the male end of the Y adapter fitting or the QuickClick adapter.

213399

FLEXIBLE STEEL MEDIUM ARM W/ QUICKCLICK

Medium arms, on average, can hold 0.5 to 2.5 lbs, depending on the length and configuration.

12” Medium Arm: #212212**18” Medium Arm: #212218****24” Medium Arm: #212224**

FLEXIBLE STEEL PRO ARM W/ QUICKCLICK

Pro arms, on average, can hold 1.5 to 4.5 lbs, depending on the length and configuration.

18” Pro Arm: #212418**24” Pro Arm: #212424****30” Pro Arm: #212430**

18” PRO ARM

W/DESKTOP BASE + TABLET HOLDER



**MODULAR PLASTIC
EXTRA
6" SEGMENT**

#213381



**MODULAR PLASTIC
ARM W/ QUICKCLICK**

8" Modular Plastic Arm: #213308

14" Modular Plastic Arm: #213314

20" Modular Plastic Arm: #213320



MOGO

MODULAR PLASTIC ARMS

- Designed for lightweight applications.
- Great for small objects and lightweight devices, such as communication switches, small cameras, and phones.
 - Tablets can be supported with the 8" arm or longer arms if kept vertical.
- Made of modular plastic beads, that can bend and be positioned independently.
- Arm can pop apart, and be combined with extra segments to customize length.
 - Kits offered with options of one or two arms.
 - Compatible with the ModularHose system.
 - Outer diameter of arm: 1.25".



**MODULAR PLASTIC
DUAL 20" ARM W/ QUICKCLICK**

Dual arm setups allow modular plastic arms to hold more weight. An integrated Y adapter creates a bridge-mounted setup, including 3 QuickClick fittings.

213348



**MODULAR PLASTIC
QUICKCLICK
ADAPTER**

#213390



**MODULAR PLASTIC
FEMALE
ADAPTER**

#213391



**MODULAR PLASTIC
Y FITTING
ADAPTER**

#213392

MOGO

QUICKCLICK ACCESSORIES

- Allows for quick changing of ends to adjust to any situation.
- All MOGO mounting arms come standard with QuickClick feature on both ends.
 - Accessories include mounting options made specifically for tablets, phones, communication devices, switches, and more.
 - Parts available to convert the ModularHose system to be QuickClick compatible (see QuickClick Adapter on pg 13).



QUICKCLICK

QUICKLY ADAPT

THE QUICKCLICK™ ACCESSORIES 'CLICK' INTO A CORRESPONDING PLATE, LOCKING THEM INTO PLACE. TO RELEASE, BOTH LEVERS NEED TO BE SQUEEZED TOGETHER TO UNLOCK THE QUICKCLICK CONNECTION.

THE SIMPLE UNLOCK FEATURE PREVENTS ANY ACCIDENTAL RELEASE, AND IS EASY FOR A USER TO ENGAGE.





QUICKCLICK PRC ACCENT / PRIO PLATE

This plate is designed to work with PRC PRiO and Accent 600, 700, 800, and 1000 devices with the QuickClick system. Use with the Mogo Flexible Steel or Modular Metal arms.

Note: Includes mounting hardware.

#201611



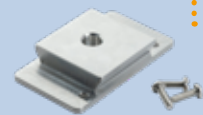
QUICKCLICK TABLET HOLDER

Adjustable tablet holder scales to 15" to hold virtually all tablets on the corners.

#201541

Optional: Add the deep v-tabs to hold encased tablets up to 0.75".

#570009



QUICKCLICK SPRING CLAMP

Approx. 6" in length with heavy duty vinyl tips/grips. Opens up to 2".

#201511



QUICKCLICK PHONE HOLDER

Adjusts to most phones/cases. Scales 2.25" to 4" wide and up to 0.75" thick.

#201545



QUICKCLICK ADJUSTABLE CLAMP

Heavy-duty clamp for flat surfaces or round tubing. Jaw opens to 2".

#201513



QUICKCLICK BOTTLE HOLDER

Aluminum bottle cage that can be adjusted for different sized bottles.

#201561



QUICKCLICK MINI CLAMP

A compact clamp ideal for tubing (can be used for flat surfaces). Opens to 1.5".

#201515



QUICKCLICK DESKTOP BASE

Weighted base great for a variety of flat surfaces. Approximately 12" x 6", 2.2 lbs.

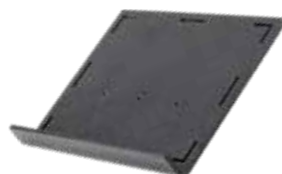
#201531



QUICKCLICK MOUNTING DISC

Flat 3" surface disc allows for easy attaching of items (fits Velcro coins).

#201571



QUICKCLICK PODIUM

This 8.5" x 11" podium/platform has a 1.5" lip for holding items in place.

#201575



QUICKCLICK MOUNTING PLATE

The 4 x 6" plate allows for a variety of uses (best in use with 3M Dual Lock).

#201573



QUICKCLICK CONNECTOR PLATE

Attach a QuickClick connector to a personal device with the 1/4"-20 bolt.

#201221



QUICKCLICK ADAPTIVE CONTROLLER MOUNT

This mounting plate offers QuickClick compatibility with heavier gaming accessories. Includes mounting screws.

#201574



QUICKCLICK WHEELCHAIR RAIL BRACKET

This rail bracket allows for a solid mount directly to a power chair. Works with Permobil, Quantum, and similar.

#201591



AN INTRODUCTION TO GIRAFFE BOTTLE



Giraffe Bottle makes staying hydrated simple, providing innovative solutions for those who may have issues with mobility. The product line features three different assistive drinking systems, all designed to function without needing to be held. Users can select a drinking system based on their specific conditions, and retain independence.

All the systems are available with a choice of a clear, plastic Tritan Bottle, or a Stainless Steel Bottle (Smoke Black). All Giraffe Bottle parts and accessories are cross compatible throughout the product line, with premium, hygienic materials.

CHECK OUT ITEMS

PAGES 24 - 31

**JOURNEY NECK**






FLEXIBLE DRINKING TUBE

TOWER XL NECK

STURDY W/ LARGER OPENING

TOWER NECK

ORIGINAL MODULAR PLASTIC

NECK LENGTHS AVAILABLE	36" (91 cm) *can be cut to length if needed	15", 25", 30", 36" (38 cm, 64 cm, 76 cm, 91 cm)	15", 25", 30", 36" (38 cm, 63 cm, 76 cm, 91 cm)
DRINKING TUBE INNER DIAMETER	1/4" (6.4mm)	1/4" (6.4mm)	5/32" (4mm)
BITE VALVE LIQUID CONTROL			—
CHECK VALVE LIQUID CONTROL	—	—	
BOTTLE HOLDER OPTIONS	Aluminum Bottle Holder/ Bottle Carry Bag	Aluminum Bottle Holder	Aluminum Bottle Holder
HANDS-FREE DRINKING SYSTEM	—		
THIS SYSTEM IS BEST FOR:	Individuals with limited upper body mobility, combined with full lung and mouth function.	Individuals with full lung and mouth function, but little to no upper body mobility.	Individuals with little to no upper body mobility, and mild to moderate reduced lung function.

**LEVELS OF HYDRATION**

EXPLORE GIRAFFE BOTTLE WITH DIFFERENT MOUNTING OPTIONS FOR ASSISTIVE HYDRATION, OR AS A SEPERATE HYDRATION BOTTLE WHEN YOU NEED IT.

PAIR IT WITH NECKS, BOTTLE HOLDERS, BOTTLE BAGS—HOWEVER YOU PAIR IT, ALL GIRAFFE BOTTLE PARTS AND COMPONENTS ARE CROSS COMPATIBLE!

GIRAFFE BOTTLE

BOTTLES, MOUNTS +
ACCESSORIESTRITAN™ PLASTIC
HYDRATION BOTTLE

- The two main options for Giraffe Bottle Drinking Systems, both measured at 24 oz (700 ml).
- All kits will provide a bottle choice of plastic Tritan, or Stainless Steel (Smoke Black).
 - Bottles are BPA Free, and FDA compliant.
- Bottles are cross compatible with all Giraffe Bottle Drinking Systems.
 - Bottles can be purchased individually as replacements for systems, or to be used as hydration bottles.

STAINLESS STEEL
HYDRATION BOTTLEGIRAFFE BOTTLES
TRITAN™ PLASTIC

Genuine Tritan™ by Eastman plastic bottle with threaded spout lid and cap.

Clear #504111

GIRAFFE BOTTLES
STAINLESS STEEL

Stainless steel bottles with threaded spout, lid, cap, and bonus insulated lid.

Smoke Black #504211
 Burnt Orange #504212
 Limited Ed. Pattern . . #504213
 Limited Ed. SGN . . . #504221

(Each SGN bottle purchase donates to giraffe conservation efforts)



GIRAFFE BOTTLE
**BOTTLE HOLDER W/
 CLAMP MOUNT**

Aluminum bottle holder for mounting on 0.75" - 1.25" round tubing. Clamp rotates horizontally and vertically.

#500311



GIRAFFE BOTTLE
**BOTTLE HOLDER W/
 RAIL MOUNT BRACKET**

Aluminum bottle holder with rail mount brackets. Made for powerchairs with accessory rails (ex. Permobil/Quantum).

#500314



GIRAFFE BOTTLE
BOTTLE CARRY BAG

Carry your bottle on your shoulder with this bag, or loop in over frames of chairs, beds, and desks.

#504062



GIRAFFE BOTTLE
DESKTOP BOTTLE HOLDER

This steel weighted base (+ 2lbs) holds bottles and assemblies securely on a table, desk, or any other flat surface.

#500323

MULTIPLE MOUNTS

GIRAFFE BOTTLE HAS SEVERAL MOUNTING SOLUTIONS DESIGNED TO BRING HYDRATION SYSTEMS ON-THE-GO. BETWEEN WHEELCHAIR COMPATIBLE BOTTLE HOLDERS, DESKTOP HOLDERS WITH WEIGHTED BASES, AND CARRY BAGS, THERE ARE PLENTY OF OPPORTUNITIES TO CREATE AN IDEAL HANDS-FREE EXPERIENCE.

GIRAFFE BOTTLES ARE ALSO COMPATIBLE WITH PRODUCTS FROM MODULARHOSE AND MOGO MOUNTING SOLUTIONS, WITH COMPATIBLE BOTTLE HOLDERS FOR RESPECTIVE MOUNTING SYSTEMS.





GIRAFFE BOTTLE JOURNEY NECK

- Features a large drinking tube, bite valve, and small clothing clip.
- Necks reach up to 36" (91cm) and can be cut to length if needed.
- Pieces for the system are interchangeable and replaceable, and materials are always made BPA free and FDA compliant.
 - This solution pairs with desks, wheelchairs, beds, tables, and more.
 - Kits come with a choice of bottle in plastic Tritan, or Stainless Steel.
- Options are available for kit to include Bottle Holder with rotating clamp for mounting, or Bottle Carry Bag.
 - Every Journey Hydration System includes a Bottle, Tube Cleaning Brush, Bite Valve, and Drinking Tube (Inner Diameter: 1/4" - 6.4mm)
 - Stainless kits include bottle brush/extra carry lid.



GIRAFFE BOTTLE JOURNEY TRITAN™ PLASTIC

Tritan Bottle Kit Includes:

- Bottle
- Drinking Tube (1/4" - 6.4mm)
- Bite Valve
- Tube Cleaning Brush

#504991 (36" Neck)



JOURNEY STARTER KIT

Convert your Giraffe Bottle over to the Journey Hydration System.

#505182



GIRAFFE BOTTLE
JOURNEY
STAINLESS STEEL

Stainless Bottle Kit Includes:

- Bottle
- Drinking Tube (1/4" - 6.4mm)
- Bite Valve
- Tube Cleaning Brush

#504992 (36" Neck)



GIRAFFE BOTTLE
JOURNEY
TRITAN™ W/ HOLDER

Tritan Bottle Kit Includes:

- Bottle
- Drinking Tube (1/4" - 6.4mm)
- Bite Valve
- Tube Cleaning Brush
- Bottle Holder

#504997 (36" Neck)



GIRAFFE BOTTLE
JOURNEY
STAINLESS W/ HOLDER

Stainless Bottle Kit Includes:

- Bottle
- Drinking Tube (1/4" - 6.4mm)
- Bite Valve
- Tube Cleaning Brush
- Bottle Holder

#504998 (36" Neck)



JOURNEY
TUBE CLEANING BRUSH

A flexible nylon cleaning brush, made for the Journey drinking tube diameter.

#504712



JOURNEY
DRINKING TUBE / VALVE

Replacement 36" Journey Tube and Bite Valve with attached clothing clip.

#505181



GIRAFFE BOTTLE
JOURNEY
TRITAN™ W/ CARRY BAG

Tritan Bottle Kit Includes:

- Bottle
- Drinking Tube (1/4" - 6.4mm)
- Bite Valve
- Tube Cleaning Brush
- Bottle Carry Bag

#504994 (36" Neck)



GIRAFFE BOTTLE
JOURNEY
STAINLESS W/ CARRY BAG

Stainless Bottle Kit Includes:

- Bottle
- Drinking Tube (1/4" - 6.4mm)
- Bite Valve
- Tube Cleaning Brush
- Bottle Carry Bag

#504995 (36" Neck)



GIRAFFE BOTTLE TOWER XL KIT STAINLESS W/ HOLDER

Stainless Steel Bottle Kit Includes:

- Bottle
- Drinking Tube (1/4" - 6.4mm)
- Bite Valve
- Neck Assembly
- Tube Cleaning Brush
- Bottle Holder

15" Neck	#504982
25" Neck	#504984
30" Neck	#504985
36" Neck	#504986

GIRAFFE BOTTLE TOWER XL NECK

- Features an extra large modular plastic neck, drinking tube, and bite valve.
 - Necks range from 15" (38cm) to 36" (91cm)
- Pieces for the system are interchangeable and replaceable, and materials are always made BPA free and FDA compliant.
 - This solution pairs great with desks, wheel chairs, beds, tables, and more.
 - Kits come with a choice of bottle in plastic Tritan or Stainless Steel.
 - Option is available for kit to include Bottle Holder with rotating clamp for mounting.
- Every Tower XL System includes a Bottle, Modular Neck, Tube Cleaning Brush, Bite Valve, and Drinking Tube (Inner Diameter: 1/4" - 6.4mm)
 - Stainless kits include bottle brush/extra carry lid.

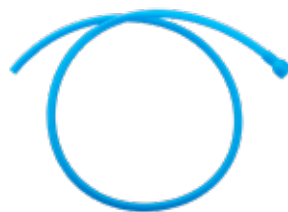


GIRAFFE BOTTLE TOWER XL KIT TRITAN™ W/ HOLDER

Tritan Bottle Kit Includes:

- Bottle
- Drinking Tube (1/4" - 6.4mm)
- Bite Valve
- Neck Assembly
- Tube Cleaning Brush
- Bottle Holder

15" Neck #504942
25" Neck #504944
30" Neck #504945
36" Neck #504946



TOWER XL DRINKING TUBE / VALVE

Tower XL drinking tube / bite valve for replacement (recommended monthly).

For 15" Neck #504072
For 25" Neck. #504074
For 30" Neck #504075
For 36" Neck #504076



TOWER XL NECK ASSEMBLY

We recommend replacing assemblies every 8-10 months, or as needed.

15" Neck #504022
25" Neck #504024
30" Neck #504025
36" Neck #504026



TOWER XL STARTER KIT

Convert your Giraffe Bottle over to the Tower XL Hands-Free Hydration System.

15" Neck #505162
25" Neck #505164
30" Neck #505165
36" Neck #505166



GIRAFFE BOTTLE TOWER XL KIT STAINLESS STEEL

Stainless Steel Bottle Kit Includes:

- Bottle
- Drinking Tube (1/4" - 6.4mm)
- Bite Valve
- Neck Assembly
- Tube Cleaning Brush

15" Neck #504972
25" Neck #504974
30" Neck #504975
36" Neck #504976



GIRAFFE BOTTLE TOWER XL KIT TRITAN™ PLASTIC

Tritan Bottle Kit Includes:

- Bottle
- Drinking Tube (1/4" - 6.4mm)
- Bite Valve
- Neck Assembly
- Tube Cleaning Brush

15" Neck #504932
25" Neck #504934
30" Neck #504935
36" Neck #504936



TOWER XL TUBE CLEANING BRUSH

A flexible nylon cleaning brush, made for the Tower XL drinking tube diameter.

#504712

GIRAFFE BOTTLE

TOWER NECK

- Features the standard modular plastic neck, drinking tube, and 1-way integrated check valve.
 - Necks range from 15" (38cm) to 36" (91cm)
- Pieces for the system are interchangeable and replaceable, and materials are always made BPA free and FDA compliant.
 - Pairs great with desks, wheel chairs, beds, tables, and more.
 - Kits come with a bottle choice in plastic Tritan, or Stainless Steel.
 - Option is available for kit to include Bottle Holder with rotating clamp for mounting.
- Every Tower System includes a Bottle, Modular Neck, Tube Cleaning Brush, Check Valve, and Drinking Tube (Inner Diameter: 5/32" - 4mm)
 - Stainless kits include bottle brush/extra carry lid.



**GIRAFFE BOTTLE
TOWER KIT
TRITAN™ W/ HOLDER**

Tritan Bottle Kit Includes:

- Bottle
- Drinking Tube (5/32" - 4mm)
- Check Valve
- Neck Assembly
- Tube Cleaning Brush
- Bottle Holder

15" Neck #504922
25" Neck #504924
30" Neck #504925
36" Neck #504926



GIRAFFE BOTTLE TOWER KIT TRITAN™ PLASTIC

Tritan Bottle Kit Includes:

- Bottle
- Drinking Tube (5/32" - 4mm)
- Check Valve
- Neck Assembly
- Tube Cleaning Brush

15" Neck	#504912
25" Neck	#504914
30" Neck	#504915
36" Neck	#504916



GIRAFFE BOTTLE TOWER KIT STAINLESS STEEL

Stainless Steel Bottle Kit Includes:

- Bottle
- Drinking Tube (5/32" - 4mm)
- Check Valve
- Neck Assembly
- Tube Cleaning Brush

15" Neck	#504952
25" Neck	#504954
30" Neck	#504955
36" Neck	#504956



GIRAFFE BOTTLE TOWER KIT STAINLESS W/ HOLDER

Stainless Steel Bottle Kit Includes:

- Bottle
- Drinking Tube (5/32" - 4mm)
- Check Valve
- Neck Assembly
- Tube Cleaning Brush
- Bottle Holder

15" Neck	#504962
25" Neck	#504964
30" Neck	#504965
36" Neck	#504966



TOWER NECK ASSEMBLY

We recommend replacing assemblies every 8-10 months, or as needed.

15" Neck	#504012
25" Neck	#504014
30" Neck	#504015
36" Neck	#504016



TOWER DRINKING TUBE / VALVE

Tower drinking tube and check valve for replacement (recommended monthly).

For 15" Neck	#504082
For 25" Neck	#504084
For 30" Neck	#504085
For 36" Neck	#504086



TOWER TUBE CLEANING BRUSH

A flexible nylon cleaning brush, made for the Tower drinking tube diameter.

#504711



TOWER SUCTION BULB

Manually prime liquid in the tube. Great for users with limited lung function.

#504031



MODULARHOSE

MODULARHOSE.COM

SALES@MODULARHOSE.COM

1-630-922-5005

MOGO MOUNTS

MOGOMOUNTS.COM

SALES@MOGOMOUNTS.COM

1-630-922-5010

GIRAFFE BOTTLE

GIRAFFEBOTTLE.COM

SALES@GIRAFFEBOTTLE.COM

1-630-922-5004

ModularHose

mogo
mounting solutions

GIRAFFE
BOTTLE

THESE ARE DIVISIONS OF
Oak Hill
BRANDS CORP

Accent is a trademark of PRC Saltillo. Canon, Apple, iPad, Microsoft, Surface, Otterbox, Android, Velcro, Loc-Line, Permobil, Quantum, and all other brands that may have been mentioned, either directly or indirectly, are trademarks of someone else and are not the property of Oak Hill Brands.

Products designed in the USA. Manufactured with domestic and foreign components.

Information and specifications subject to change at any time without notice.

Giraffe Bottle, MOGO, QuickClick, ModularHose are registered trademarks of Oak Hill Brands Corp.

v2204